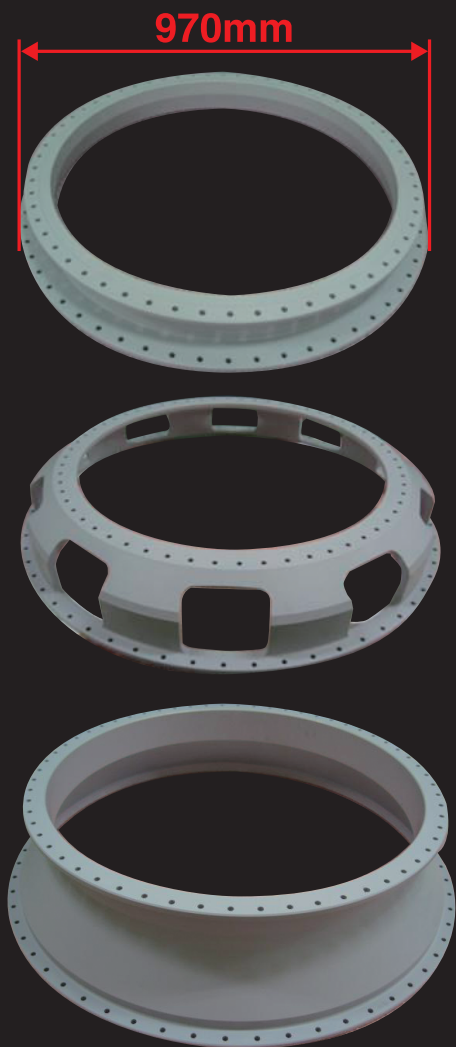


Low Thermal Expansion Ceramics

Application Example

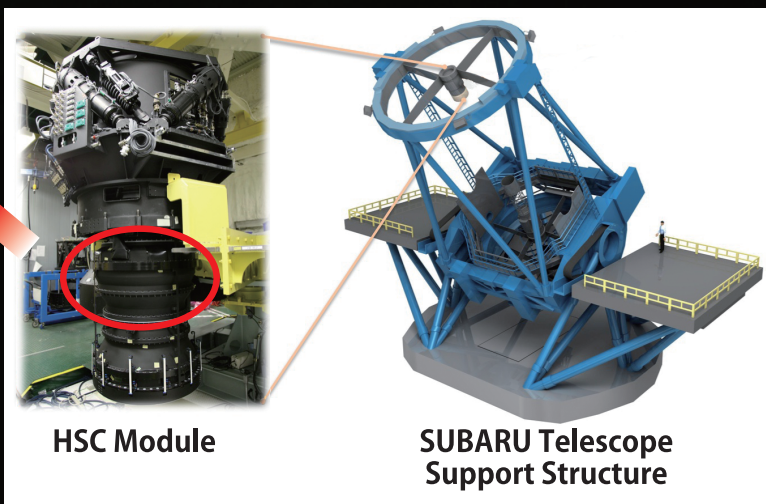
Cordierite camera lens support in the SUBARU telescope



Lens Support made by Kyocera Low CTE Ceramics < Cordierite CO720 >



©NAOJ



HSC Module

SUBARU Telescope Support Structure

In 2012 when the National Astronomical Observatory of Japan (NAOJ) installed a new super wide angle camera “Hyper Suprime-Cam (HSC)” into SUBARU telescope, there were two conflicting design requirements for adaptive optics. One was to make a larger lens aperture and the other was to make the lens lighter.

Kyocera’s Cordierite was chosen as the best material to achieve the two conflicting design requirements for the Lens Support. Cordierite’s superior characteristics made it possible to have a “slim design with enough material strength and rigidity to support Lens Structure” and “minimal deformation due to temperature fluctuations”.